



Windows® Compatible

Multi-Recorder
Monitoring & Access

Single Recorder
Multiple Recorders

Multi-User, Simultaneous
Notification

Visual and Audible
Alarms

Status Inquiry Screen

- Recorder Module
- Last Requested Update
- Media Deck Mode
- Media Name
- Media Start/End Time
- Media Capacity
- Current Open Alarms

Alarm Notification

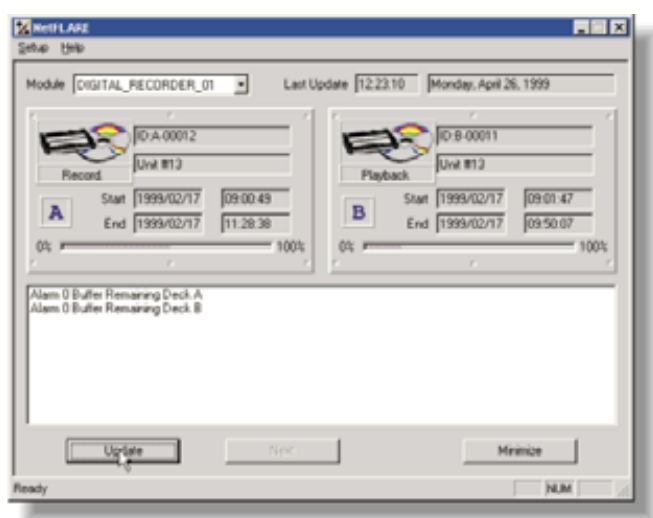
- Media Capacity
- Hard Disc Buffer
- Media Fault
- Losing Audio
- Inactive Channel
- Invalid Password
- Loss of Power
- Network Problem

NetFLARE™

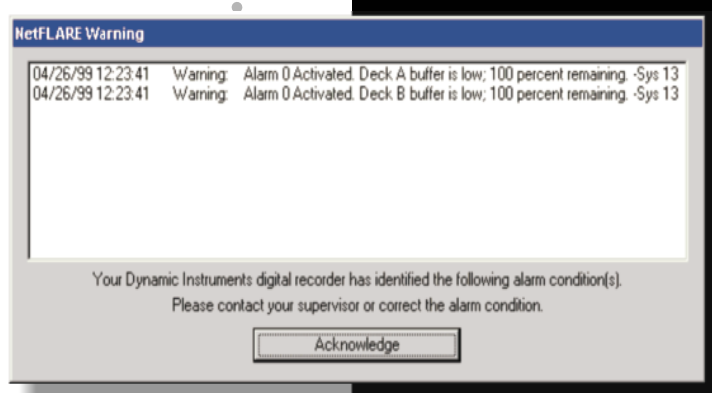
Recorder Status & Alarm Notification System

- Reliable performance is synonymous with our full line of digital voice recorders. Our exacting design standards, stringent testing and ISO 9001:2000 Certification serves to ensure trouble free operation. Yet in those rare occurrences when a malfunction occurs, *NetFLARE™* is your trusted network messenger, polling the recorder at regular intervals to confirm system integrity and keeping you informed of recorder status, prompting corrective action when required.

• **NetFLARE™ Status Screen**



• **Alarm Notification Prompt**



NetFLARE™



Recorder Status & Alarm Notification System

NetFLARE™ eliminates the problems associated with undetected recorder alarm conditions. Acting as your electronic watchdog, NetFLARE™ continuously monitors and reports recorder alarm conditions and displays system status functions.

NetFLARE™ is offered as a freestanding application which can be installed on multiple PC's residing on a network with DI's Digital Voice Recorders and Call Check Systems.

NetFLARE™ responds to an alarm condition by posting an alarm notification on the remote PC monitor describing the malfunction and simultaneously sounding an audible alarm.

NetFLARE™ will continue to re-post the original alarm until the condition is resolved at the recorder.

System status can be obtained in a fraction of the time it would take to walk to a recorder. NetFLARE™ also advises you of:

- ✓ The status for each media drive
- ✓ The archive media ID
- ✓ The start and end date/time for each installed archive media
- ✓ The remaining archive capacity for each optical disc or DAT tape
- ✓ Loss of power to the recorder
- ✓ Loss of network connectivity

NetFLARE™ ...

*Providing you information:
where you need it — when you need it!*

NetFLARE™ Specifications*

Operating System	Microsoft Windows® 2000 Professional or XP Professional
PC Type	Multi-Media Classification
CPU	Pentium® 400 MHz or higher
Hard Disc Space	20 MB
RAM Memory	256 MB
Monitor	SVGA - Configured for 800x600 resolution or better - 16 bit color "thousands of colors" or better
Sound Card	SoundBlaster™ compatible
Speakers	Shielded Computer Speakers
Floppy Drive	3.5", 1.44 MB drive
Network Card	Ethernet - 10 MB/sec or better
Network Configuration	Peer to Peer - TCP/IP
Alarms Announced	<ul style="list-style-type: none">• Media Capacity• Media Fault• Invalid Password• Loss of Power• Hard Disc Buffer• Inactive Channel• Losing Recordings• Network Problems

All other alarms passed from the recorder application software (WatchDOG). **

Recorder Requirements Compatible with all DI Reliant™ and DI VoiceVault™ recorders

* Specifications subject to change without notice.

** Power loss or critical alarms are announced through a recorder contact closure connector to enable notification through an outbound dialer or other external alarm devices (WatchDOG).

Windows® is a registered trademark of Microsoft®, Pentium is a registered trademark of Intel.

Authorized Representative:

**DYNAMIC
INSTRUMENTS**

3860 Calle Fortunada - San Diego, CA 92123-1825
(800) 793-3358 • www.dynamicinst.com

**AAT COMMUNICATIONS
SYSTEMS CORPORATION**

3030 Veterans Road West - Staten Island, New York 10309
800-622-6224

Sales@aatcomm.com

Visit us on the Web @ www.aatcomm.com